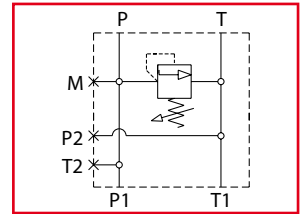




BC3

Base componibile cetop3
Cetop3 bankable manifolds

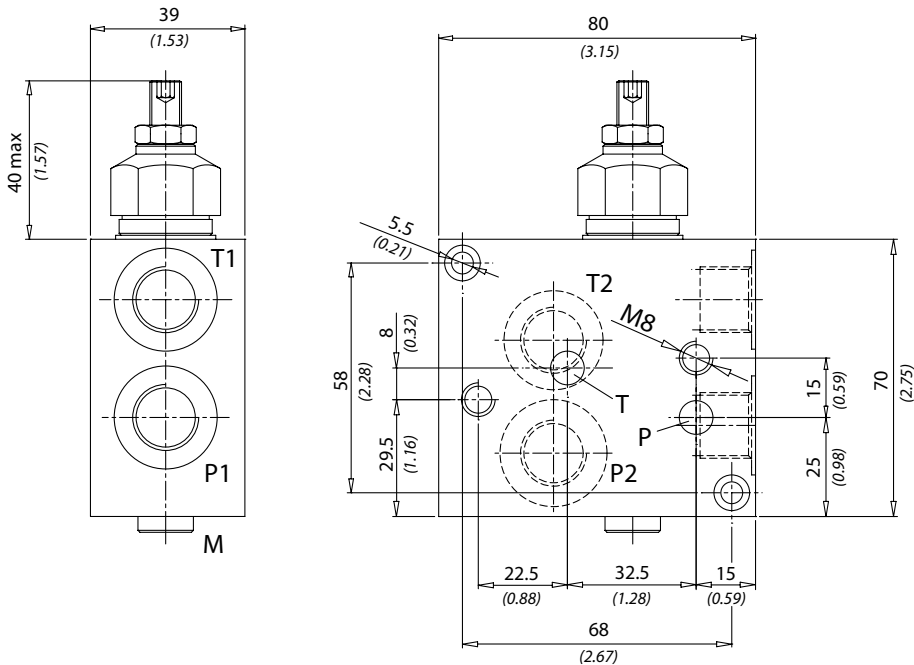


LEHENGOMAK, S.p.A.



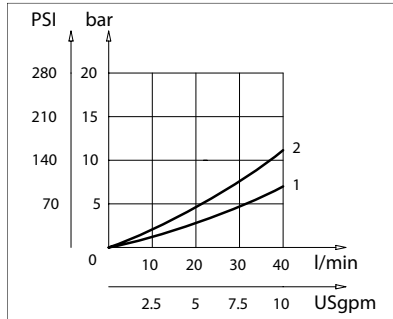
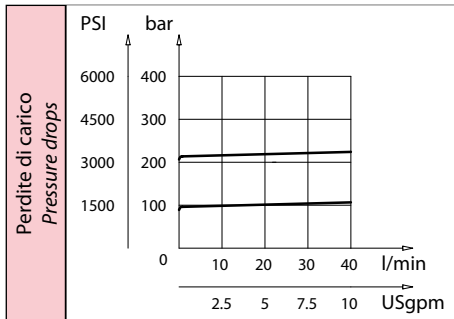
Dati tecnici Technical data

Viscosità fluido Fluid viscosity	10-500 mm ² /s 45 to 2000 ssu (6 to 420 cSt)
Classe di contaminazione Filtration	ISO code 16/13 SAE class 4 or better
Temperatura fluido Fluid temperature	-20°C +80°C -4°F +176°F
Temperatura ambiente Ambient temperature	-20°C +50°C -4°F +122°F



Attacchi / Ports	
P-T-A-B	BSPP 3/8
M	BSPP 1/4

[mm
(Inches)]



Codice ordinazione Ordering code			
BC3 - X - Y			
X	Regolazione / Setting	Y	Molla - Spring
C		1	100 bar (1450 PSI) max
		2	250 bar (3500 PSI) max
V			

Caratteristiche tecniche Technical performances

Codice Code	Portata Max Max flow l/min - USgpm	Pressione Max Max pressure bar/PSI	Peso approssimativo Approx weight Kg / lb	Tipo di valvola Type of valve
BC3	40 (10)	210 (3000)	0,8 (1.76)	VMD40